

PART OF THE SE.1/4, OF SECTION 35, T.6N., R.2W., S.L.B. & M.  
WEST HAVEN INDUSTRIAL PARK, LOT No. 10, FIRST AMENDMENT

IN WEST HAVEN CITY

TAXING UNIT: 277

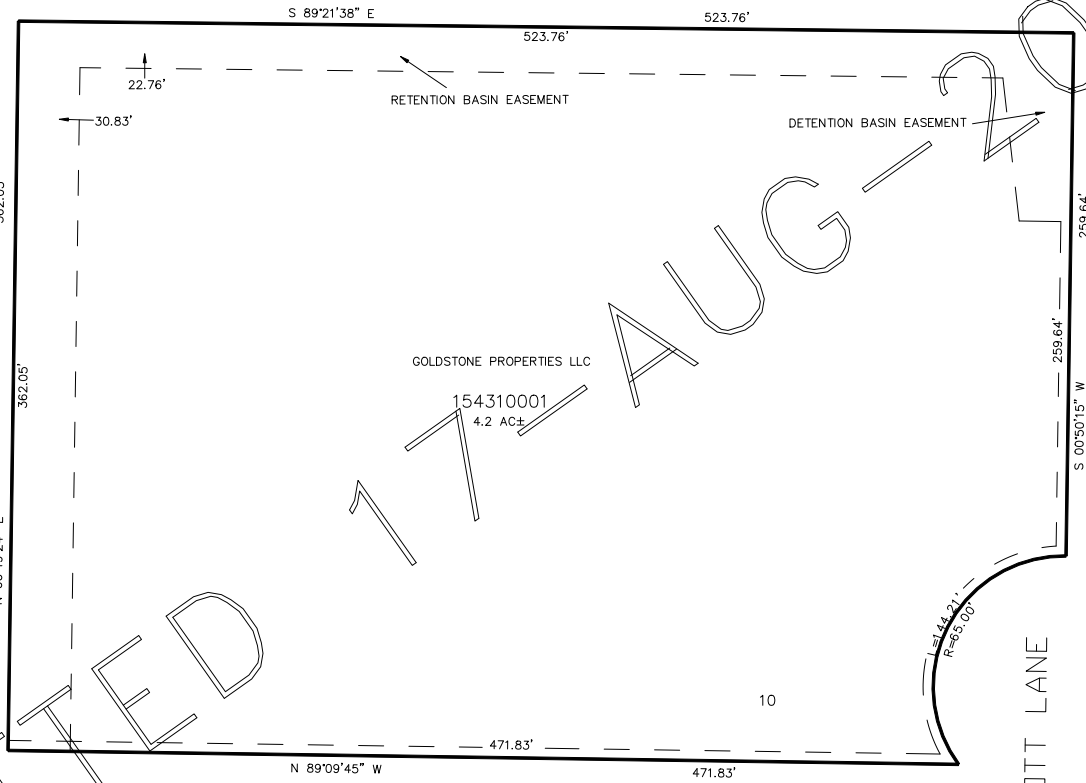
SCALE 1" = 50'

SEE PAGE 281

SEE PAGE 281

SEE PAGE 281

SEE PAGE 281



FOR COMPLETE ENG DATA SEE  
ORIGINAL DEDICATION PLAT IN  
BOOK 65, PAGE 61 OF RECORDS.

10' UTILITY & DRAINAGE EASEMENTS EACH  
SIDE OF PROPERTY LINES AS INDICATED  
BY DASHED LINES EXCEPT AS OTHERWISE  
SHOWN.

\*FOR TAX PURPOSES ONLY\*

BK 03-07